

4. Technical data

Electrical data

Pump type	Voltage [V]	P1 [W]	P2 [W]	n [rpm]	I _n [A]	I _{start} [A]	Standby power [W]
SCALA1 System 3-35	1 x 230	720	450	2800	3.27	13.0	1.5
SCALA1 System 3-45	1 x 230	910	580	2800	4.10	17.0	1.5

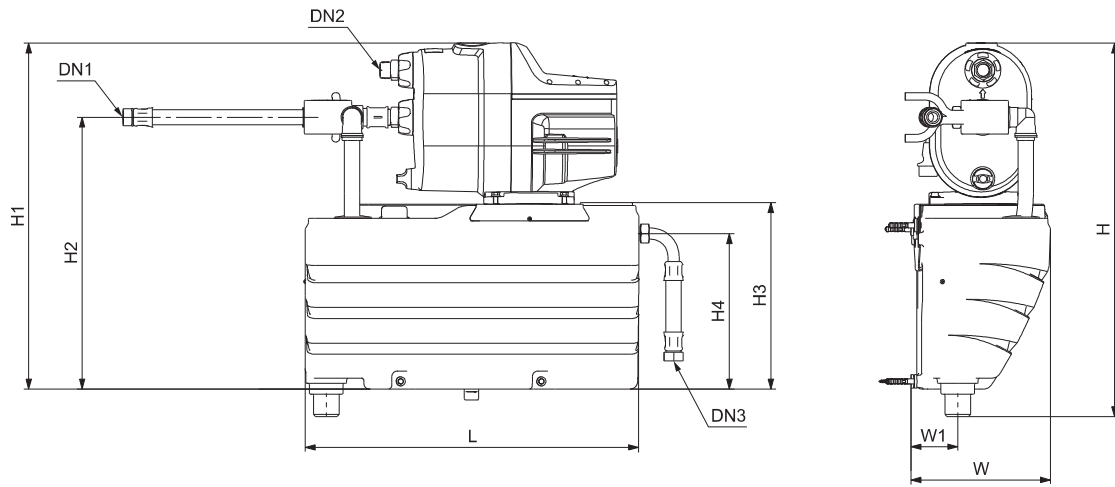
Operating conditions

	SCALA1 System	
	3-35	3-45
Pump water temperature [°C]	5 - 35	5 - 35
Max. ambient temperature [°C]	55	55
Max. liquid temperature [°C]	45	45
Max. system pressure [bar]	8	8
Max. inlet pressure [bar]	4	3
Max. head [m]	36	45
Nominal head [m]	20	25
Nominal flow [m ³ /h]	3.72	3.59
IP Rating System	IP 20	IP 20
Pumped liquid	Rainwater	Rainwater
Noise level [db(A)]	< 55	< 55
Frequency of starts and stops	25 per hour	25 per hour
Start pressure (pstart) [bar]	1.5	2.2
Inlet and outlet connections	1"	1"
Diameter of tap water pip	3/4"	3/4"
Diameter of overflow	PP DN 50 M	PP DN 50 M
Tank capacity [L]	15	15
Material of tank	HDPE (high-density polyethylene)	
Float switch level of tank	Start/Stop float switch with 20 m cable	
Media type	Non-aggressive and non-explosive liquids without solid particles or fibres or abrasive water.	

* Noise level of SCALA1 pump

** Useful volume is 12 L

Dimensions and weights

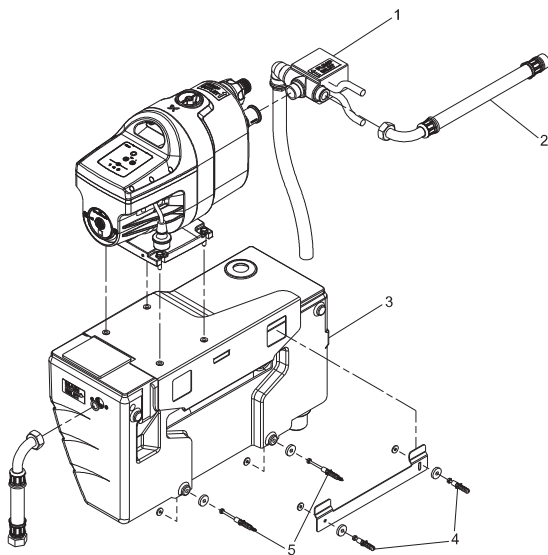


TM079191

Pump	H [mm]	H1 [mm]	H2 [mm]	H3 [mm]	H4 [mm]	L [mm]	W [mm]	W1 [mm]	DN1	DN2	DN3	Weight [kg]
SCALA1 System 3-35	733	679	533.5	366	305	650	259.3	77	1"	1"	3/4"	26
SCALA1 System 3-45	733	679	533.5	366	305	650	259.3	77	1"	1"	3/4"	27

Construction

Approvals and markings



TM079674



TM021685

Pos.	Description	Material
1	Electronic switch	-
2	Hose	-
3	Tank	HDPE (high-density polyethylene)
4	Screw TE-AB 6, 3x50 DIN 7976 ZNT C15	-
5	Screw TE-AB 6, 3x50 DIN 7976 ZNT C15	-

5. Accessories

Inlet filter



Inlet filter accessory

When using SCALA products for pumping rainwater or well water, we recommend installing a filter on the inlet side to provide clean water to increase the longevity of the pump, and to protect it from sand, gravel or other debris.

Features of the filter include:

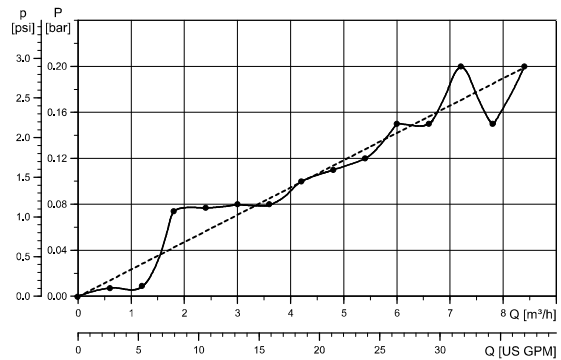
- Clean water provides long life for the pump.
- Quick and easy installation.
- Easy maintenance and cleaning.

The square mesh allows a uniform flow along the entire surface of the cartridge itself, which minimizes the possibility of clogging. Also, the smooth surface of the filter ensures easy washing and cleaning. The filter cartridges provide a nominal filtration with an efficiency of 80 %. If properly used, they can be used repeatedly maintaining constant efficiency.

The inside core is manufactured from talc-filled polypropylene and a welded nylon net. The filter housing is composite.

Filter specifications

Micron rating	250
Efficiency percentage	80
Max. working pressure [bar (psi)]	8 (116)
Max. differential pressure [bar (psi)]	0.8 (11.6)
Max. working temperature	45 °C (113 °F)



Inlet filter pressure loss

Product numbers

Description	Connection	Part number
Inlet filter, 250 micron	1" Rp	99725183
Inlet filter, 250 micron	1" NPT	99725185