
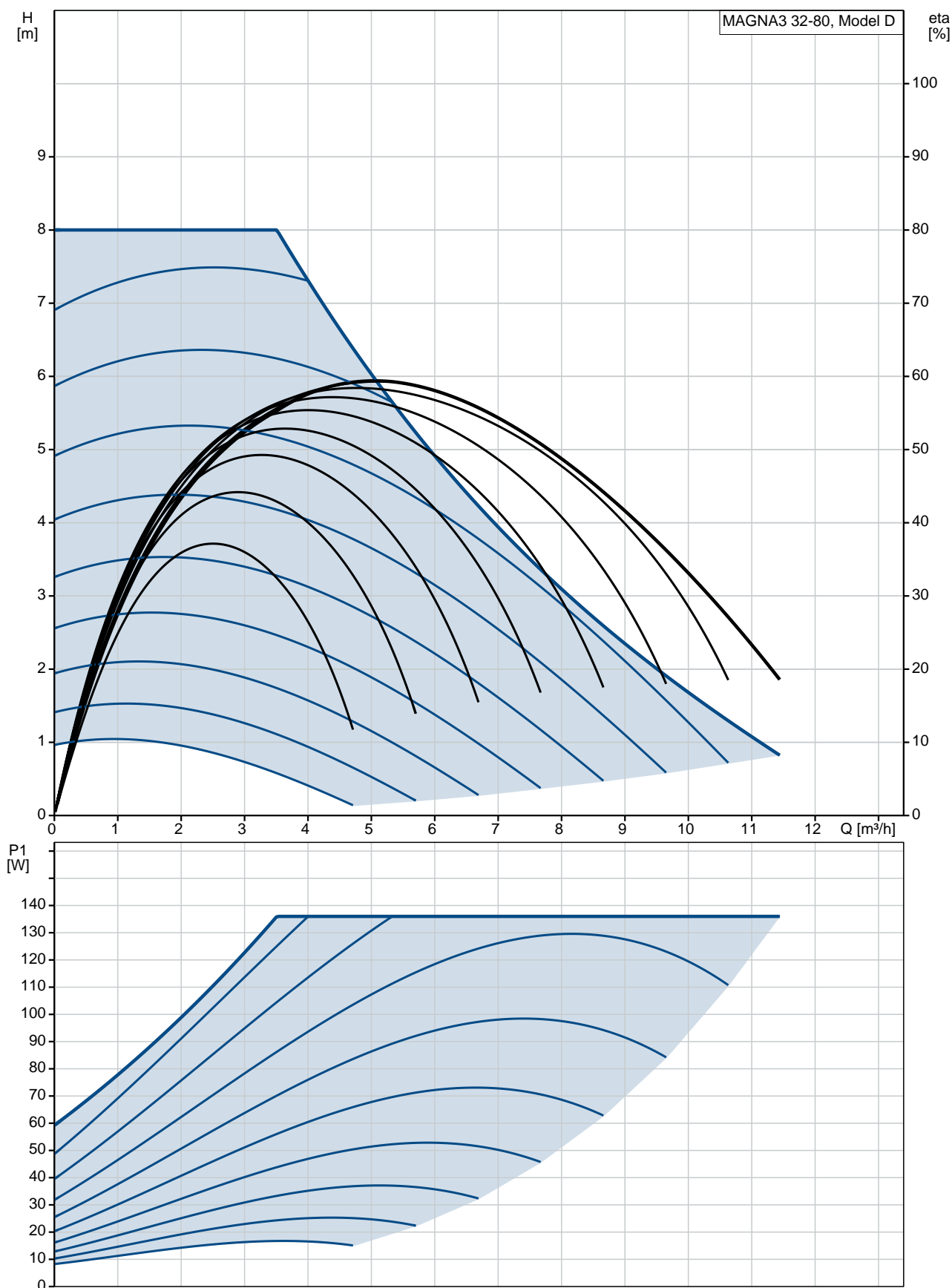
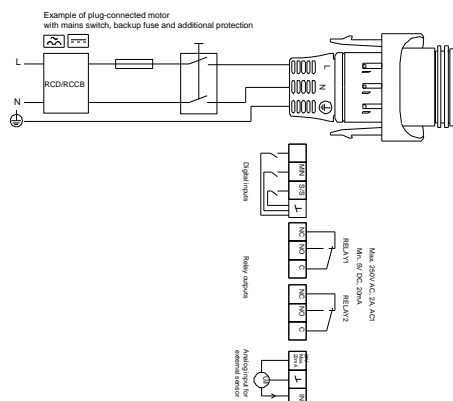
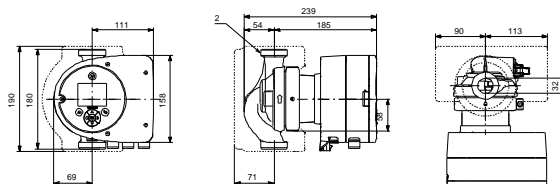
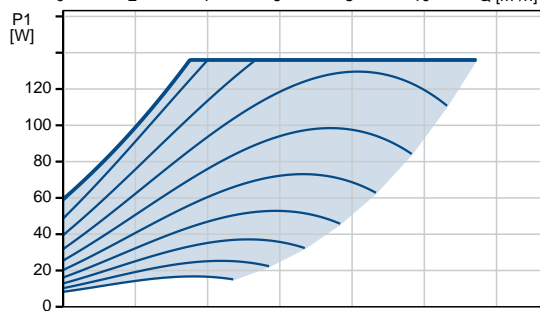
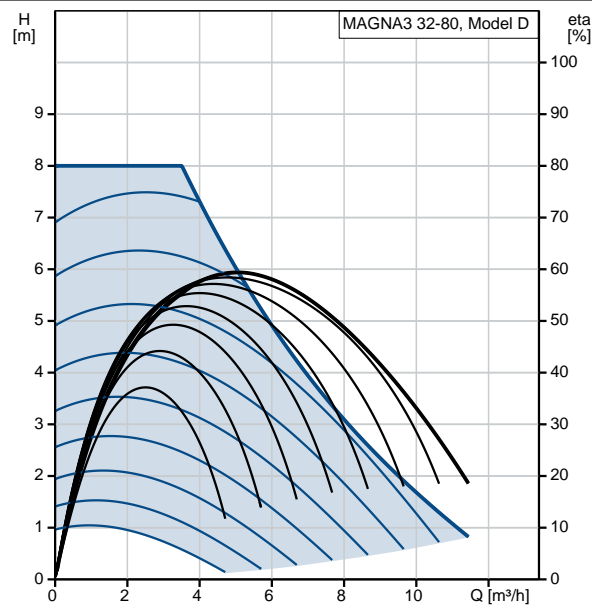


Qty.	Description
1	<p data-bbox="199 324 383 369">MAGNA3 32-80</p> <div data-bbox="231 392 550 705">  </div> <p data-bbox="590 705 1077 728">Note! Product picture may differ from actual product</p> <p data-bbox="199 728 470 761">Product No.: 97924256</p> <p data-bbox="199 784 1460 873">The Grundfos MAGNA3 is a circulator pump with permanent magnet motor that will fit both heating, cooling and domestic hot water circulation applications perfectly, making it the obvious choice for almost any building project – old or new.</p> <p data-bbox="199 896 1460 985">With its unrivalled efficiency, all-encompassing range and built-in communication capabilities plus functionalities replacing system components, the MAGNA3 is ideal for building owners, engineers and specifiers looking to create high-performance systems for buildings.</p> <p data-bbox="199 1008 1460 1075">The MAGNA3 is a canned-rotor type, i.e. pump and motor form an integral unit without shaft seal and with only two gaskets for sealing. The bearings are lubricated by the pumped liquid.</p> <p data-bbox="199 1097 1173 1142">The innovative clamp with only one screw enables easy repositioning of the pump head.</p> <p data-bbox="199 1164 1300 1209">The MAGNA3 is a pump with no maintenance requirements and with extremely low Life Cycle Cost.</p>

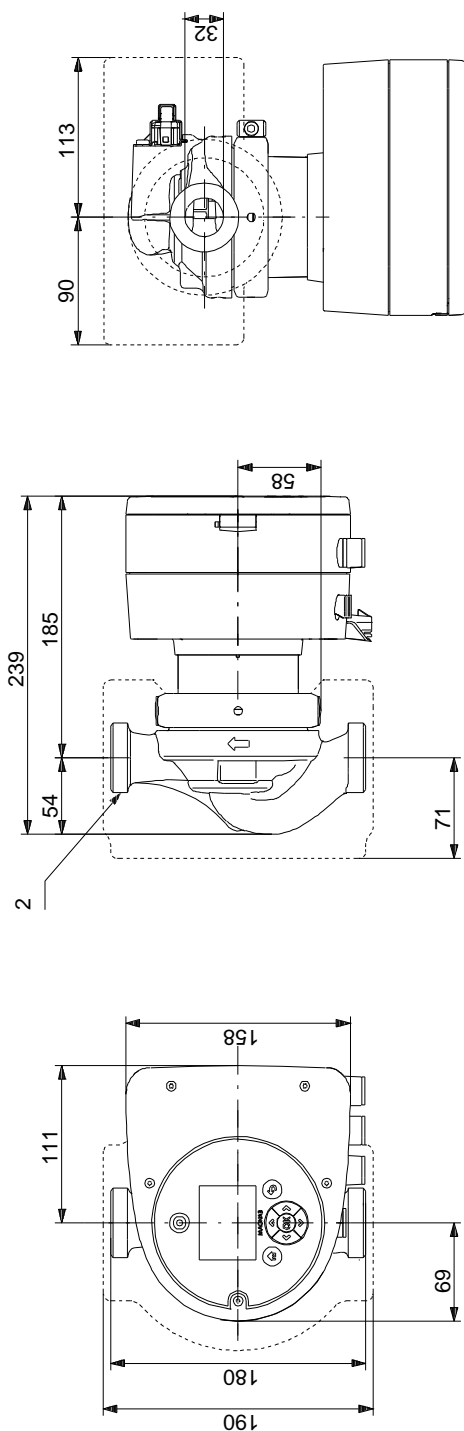
97924256 MAGNA3 32-80



Description	Value
General information:	
Product name:	MAGNA3 32-80
Product No:	97924256
EAN number:	5710626493319
	5710626493319
Technical:	
Rated flow:	5.6 m³/h
Rated head:	4.6 m
Head max:	80 dm
TF class:	110
Approvals on nameplate:	CE, VDE, EAC, CN ROHS, WEEE
Model:	D
Materials:	
Pump housing:	Cast iron
	EN-GJL-200
	ASTM A48-200B
Impeller:	PES 30%GF
Installation:	
Range of ambient temperature:	0 .. 40 °C
Maximum operating pressure:	10 bar
Pipe connection:	G 2"
Pressure rating:	PN10
Port-to-port length:	180 mm
Liquid:	
Pumped liquid:	Water
Liquid temperature range:	-10 .. 110 °C
Selected liquid temperature:	60 °C
Density at selected liquid temperature:	983.2 kg/m³
Electrical data:	
Power input - P1:	9 .. 136 W
Mains frequency:	50 / 60 Hz
Rated voltage:	1 x 230 V
Maximum current consumption:	0.09 .. 1.19 A
Enclosure class (IEC 34-5):	X4D
Insulation class (IEC 85):	F
Others:	
Energy (EEI):	0.18
Net weight:	4.8 kg
Gross weight:	5.27 kg
Shipping volume:	0.015 m³
Danish VVS No.:	380791080
Swedish RSK No.:	5732579
Finnish LVI No.:	4615545
Norwegian NRF no.:	9042333

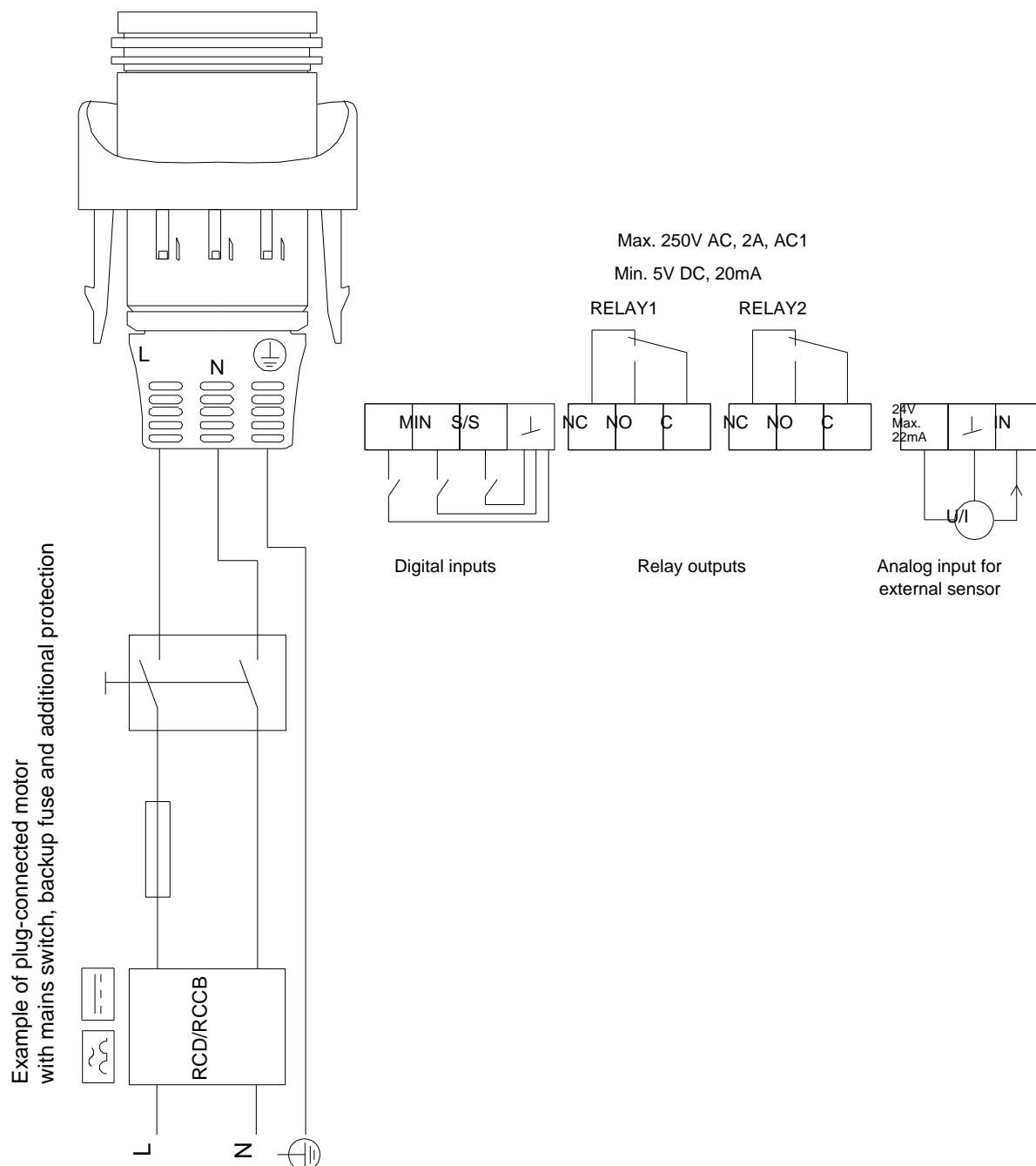


97924256 MAGNA3 32-80



Note! All units are in [mm] unless others are stated.
Disclaimer: This simplified dimensional drawing does not show all details.

97924256 MAGNA3 32-80



Example of plug-connected motor
with mains switch, backup fuse and additional protection