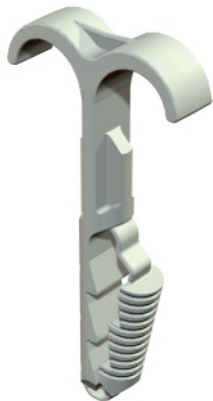


Double push-fit clip



Save time and effort – with the highly flexible OBO plug-in anchor system. All you need is a drill hole with a diameter of 6 mm. Then you can simply push the different push-fit anchors into the drill holes by hand – with the minimum of force.

Type	Clamping range D mm	Bore hole Ø mm	Bore hole depth mm	Colour	Pack. pcs	Weight kg/100 pcs.	Item No.
1974 2X4-12	4-12	6	40	Light grey	100	0,128	2197855
1974 2X12-25	12-25	6	40	Light grey	100	0,282	2197863

PA Polyamide

Dimensions

