



V2495

Verafix-VKE

H-Block for compact radiators

APPLICATION

The Verafix-VKE is an lockshield valve for compact radiators with connection centres of 50 mm. It is used on two-pipe systems with radiators which have integral valves to regulate and shut-off individual radiators.

Verafix-VKE is suitable for hot water heating systems.

Verafix-VKE with 1/2" internal threads are suitable for radiators which include the following makes:

Bemm	Finimètal	Northor	Superia
Concept	Ferrolì	Purmo	Thor
Dia-Norm	Henrad	Radson	VEHA
Dia-therm	Korado	Schäfer	Vogel & Noot
Dura	Manaut	Stelrad	

Verafix-VKE with 3/4" external threads are suitable for radiators which include the following makes:

Baufa	Buderus	Kermi	Ribe
Brötje	De Longhi	Reusch	RIOPanel
Brugman			

FEATURES

- Optional flow direction. Performance values apply for both directions of flow
- Robust brass housing
- Connection on pipework side 3/4" external thread for copper, soft steel, plastic and composite pipes
- Connectors on radiator side 3/4" external thread with conus

SPECIFICATIONS

Medium:	Water
pH-value:	8 - 9.5
Max. operating temperature:	120 °C (248 °F)
Max. operating pressure:	10.0 bar (145 psi)
k _{vs} (C _{vs})-value:	
Straight	3.5
Angle	1.8



DESIGN

The Verafix-VKE consists of:

- Straight valve body for floor connection or angle valve body for wall connection
- Ball valve insert
- Radiator connection nuts
- Universal externally threaded connections (Eurotaper connections) suitable for copper, precision steel tube, plastics and composite tube (see accessories for external thread fittings)

MATERIALS

- Hot-forged brass body
- Brass nickel ball valve insert
- EPDM O-ring sealings
- Brass union connections
- Brass radiator connection nuts
- Seat sealings PTFE
- EPDM seals

FUNCTION

The supply and return of the radiator can be shut-off by turning the ball valve inserts of the Verafix-VKE to the horizontal position with a screwdriver. The valves are supplied set fully open.

DIMENSIONS

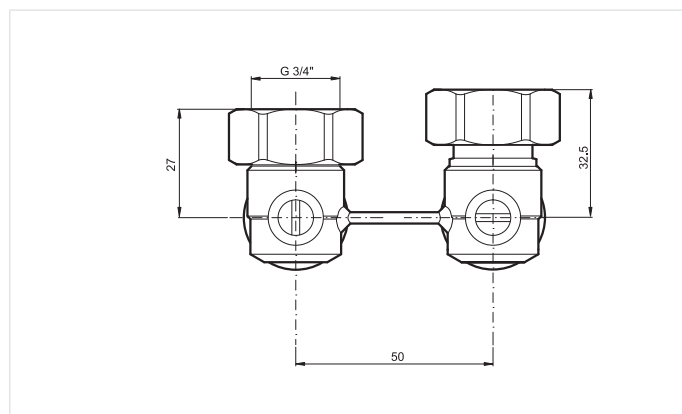


Fig. 1. Verafix-VKE angle
with integrated cone

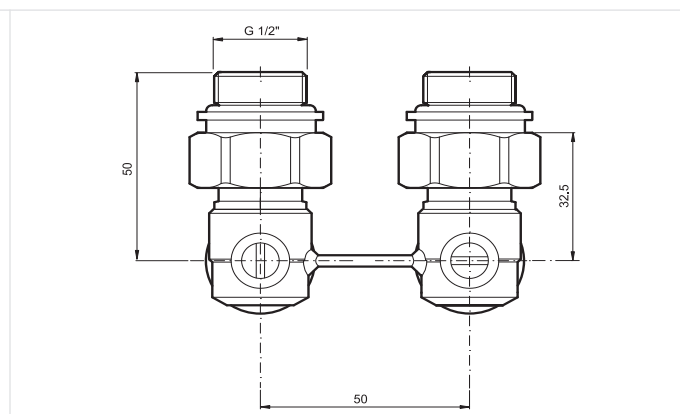


Fig. 2. Verafix-VKE angle
with integrated cone and double nipple

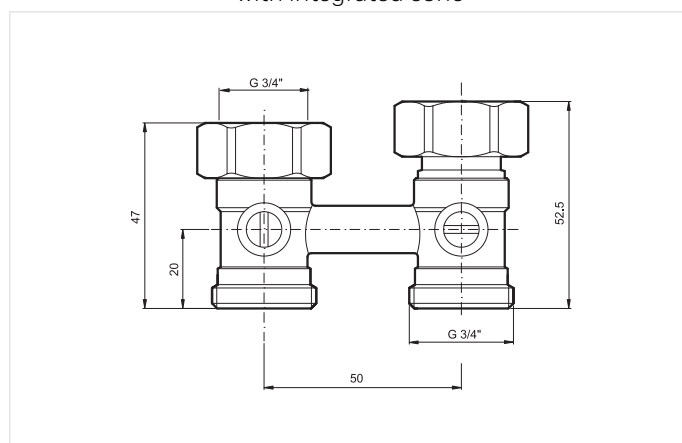


Fig. 3. Verafix-VKE straight
with integrated cone

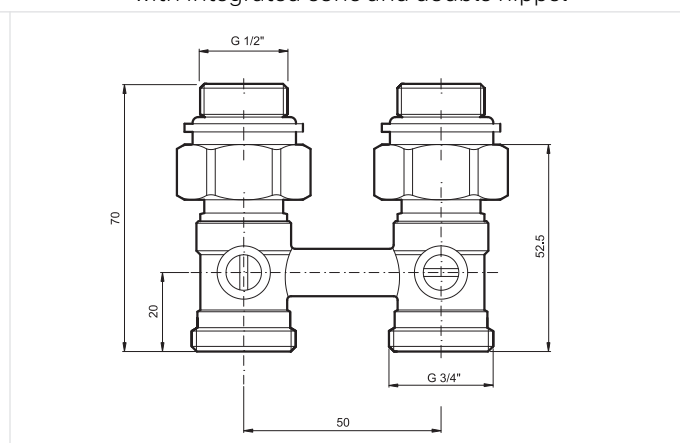


Fig. 4. Verafix-VKE straight
with integrated cone and double nipple


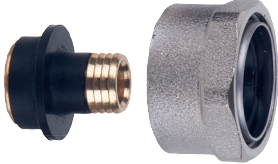
Note: All dimensions in mm unless stated otherwise.

ORDERING INFORMATION

Tab. 1 Dimensions and OS-Nos (OS=Ordering System)

Type	Pipe connection	Radiator connection	DN	$k_{vs}(C_{vs})$ - value	OS-No.
Angle (wall connection) integrated cone	3/4" external	3/4" external	15	1.8	V2495EX020A
Angle (wall connection) integrated cone and double nipple	3/4" external	1/2" external	15	1.8	V2495EY015A
Straight (floor connection) integrated cone	3/4" external	3/4" external	15	3.5	V2495DX020
Straight (floor connection) integrated cone and double nipple	3/4" external	1/2" external	15	3.5	V2495DY015

ACCESSORIES

	Description	Dimension	Part No.
	FEG3/4CS Compression fitting for COPPER and STEEL pipe. Consisting of one-piece (preassembled) nut. Soft sealing connection. For valves with external thread G ³ / ₄ ". Note: Reinforcing insert for copper or soft steel pipe with 1.0 mm wall thickness not required. Max. operating temperature 90°C, max. operating pressure 10 bar.		
	G ³ / ₄ ", 1 pcs.	10 mm	FEG3/4CS10
	G ³ / ₄ ", 1 pcs.	12 mm	FEG3/4CS12
	G ³ / ₄ ", 1 pcs.	14 mm	FEG3/4CS14
	G ³ / ₄ ", 10 pcs.	14 mm	FEG3/4CS14-10
	G ³ / ₄ ", 1 pcs.	15 mm	FEG3/4CS15
	G ³ / ₄ ", 10 pcs.	15 mm	FEG3/4CS15-10
	G ³ / ₄ ", 1 pcs.	16 mm	FEG3/4CS16
	G ³ / ₄ ", 1 pcs.	18 mm	FEG3/4CS18
	FEG3/4P Compression fitting for PEX pipe. Consisting of one-piece (preassembled) nut and reinforcing insert. Soft sealing connection. For valves with external thread G ³ / ₄ ". Note: Max. operating temperature 90°C, max. operating pressure 10 bar.		
	G ³ / ₄ ", 1 pcs.	12 x 1.1 mm	FEG3/4P12X1.1
	G ³ / ₄ ", 1 pcs.	16 x 1.5 mm	FEG3/4P16X1.5
	FEG3/4PM Compression fitting for PEX and MULTILAYER pipe. Consisting of one-piece nut with preassembled antitorsion elastic compression ring and one-piece reinforcing insert. For valves with external thread G ³ / ₄ ". Note: Max. operating temperature 90°C, max. operating pressure 10 bar.		
	G ³ / ₄ ", 1 pcs.	14 x 2 mm	FEG3/4PM14X2
	G ³ / ₄ ", 1 pcs.	16 x 2 mm	FEG3/4PM16X2
	G ³ / ₄ ", 10 pcs.	16 x 2 mm	FEG3/4PM16X2-10
	G ³ / ₄ ", 1 pcs.	16 x 2.2 mm	FEG3/4PM16X2.2
	G ³ / ₄ ", 1 pcs.	17 x 2 mm	FEG3/4PM17X2
	G ³ / ₄ ", 10 pcs.	17 x 2 mm	FEG3/4PM17X2-10
	G ³ / ₄ ", 1 pcs.	18 x 2 mm	FEG3/4PM18X2
	G ³ / ₄ ", 10 pcs.	18 x 2 mm	FEG3/4PM18X2-10
	G ³ / ₄ ", 1 pcs.	20 x 2 mm	FEG3/4PM20X2
	VS3296A Double nipple (2 pcs.)		
	for all V2495		VS3296A015

INSTALLATION EXAMPLE

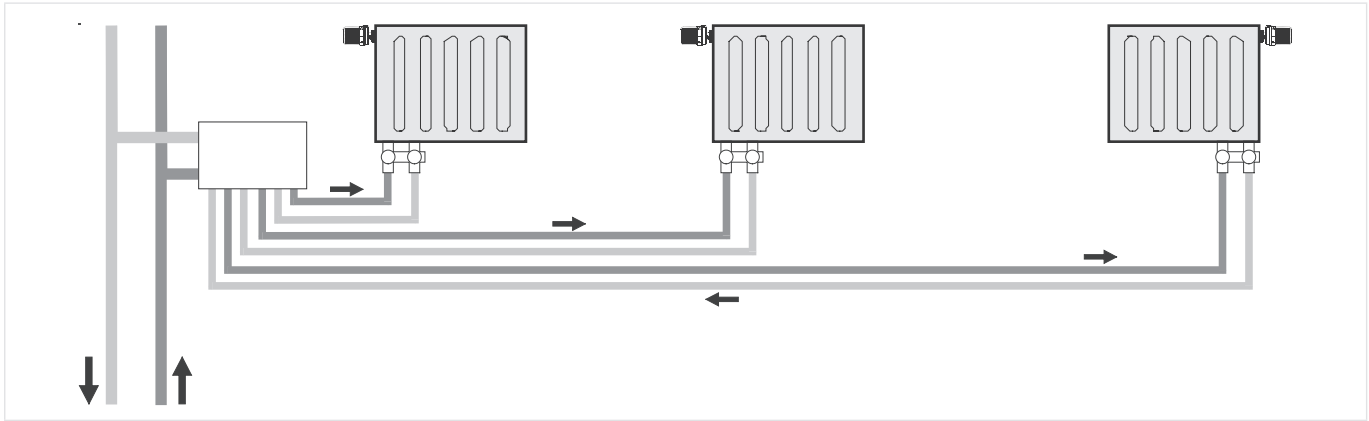
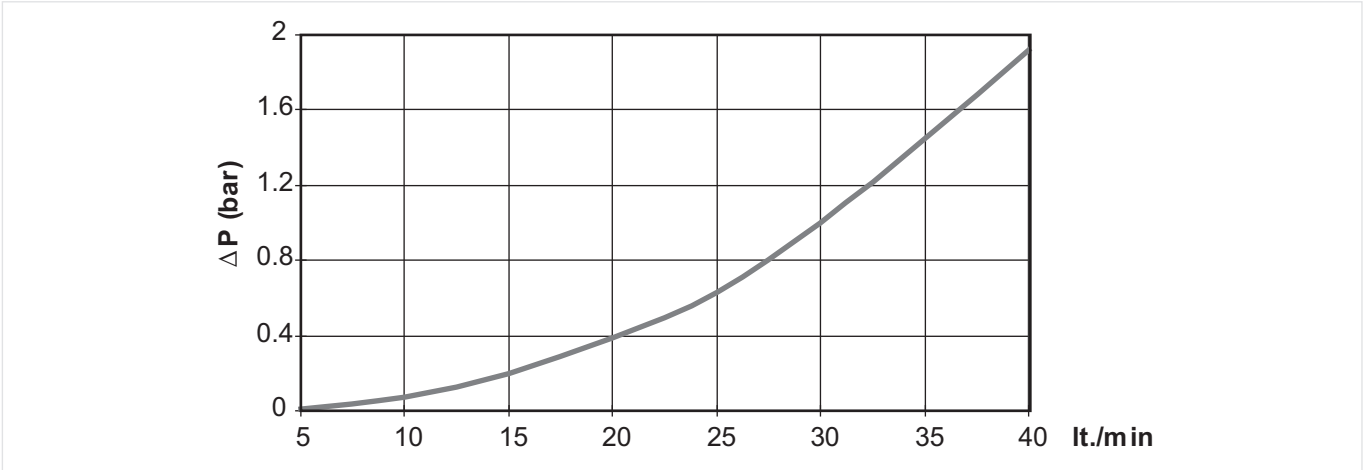


Fig. 5. Two-pipe system with distribution manifold and Verafix-VKE

PLEASE NOTE:

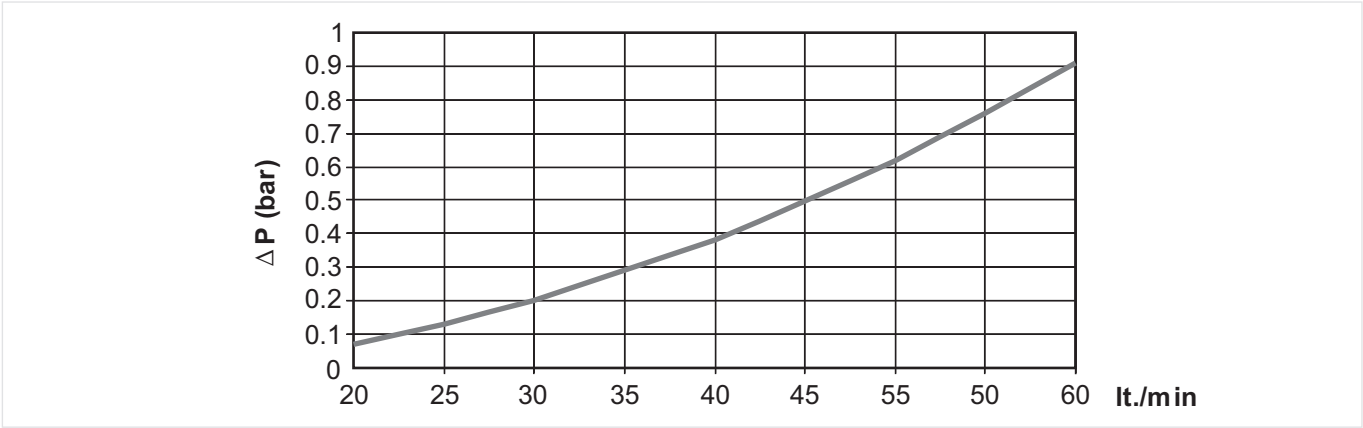
- To avoid stone deposit and corrosion the composition of the medium should conform with VDI-Guideline 2035
- Additives have to be suitable for EPDM sealings
- System has to be flushed thoroughly before initial operation with all valves fully open
- Any complaints or costs resulting from non-compliance with above rules will not be accepted by Honeywell Home
- Please contact us if you should have any special requirements or needs

FLOW DIAGRAM VKE2495E



lt./min	5	10	15	20	25	30	35	40
Δp (bar)	0.01	0.07	0.20	0.39	0.63	1.00	1.45	1.92

FLOW DIAGRAM VKE2495D



lt./min	20	25	30	35	40	45	50	55	60
Δp (bar)	0.07	0.13	0.20	0.29	0.38	0.50	0.62	0.76	0.91

For more information
homecomfort.resideo.com/europe



Ademco 1 GmbH
Hardhofweg 40
74821 MOSBACH
GERMANY
Phone: +49 6261 810
Fax: +49 6261 81309

Manufactured for and on behalf of the
Pittway Sàrl, La Pièce 4, 1180 Rolle, Switzerland
by its Authorised Representative Ademco 1 GmbH
EN0H-2211GE25 R0419
Subject to change
© 2019 Resideo Technologies, Inc.
The Honeywell Home trademark is used under
license from Honeywell International Inc.

